

**COURSE
CONUNDRUM**

Draw a Course
Conundrum Card
now.



**COURSE
CONUNDRUM**

Draw a Course
Conundrum Card
now.



**COURSE
CONUNDRUM**

Draw a Course
Conundrum Card
now.



**COURSE
CONUNDRUM**

Draw a Course
Conundrum Card
now.



**COURSE
CONUNDRUM**

Draw a Course
Conundrum Card
now.



**COURSE
CONUNDRUM**

Draw a Course
Conundrum Card
now.



**COURSE
CONUNDRUM**

Draw a Course
Conundrum Card
now.



**COURSE
CONUNDRUM**

Draw a Course
Conundrum Card
now.



**COURSE
CONUNDRUM**

Draw a Course
Conundrum
Card now.



**COURSE
CONUNDRUM**

Draw a Course
Conundrum
Card now.



**COURSE
CONUNDRUM**

Draw a Course
Conundrum Card
now.



**COURSE
CONUNDRUM**

Draw a Course
Conundrum Card
now.



**COURSE
CONUNDRUM**

Draw a Course
Conundrum Card
now.



**COURSE
CONUNDRUM**

Draw a Course
Conundrum Card
now.



**COURSE
CONUNDRUM**

Draw a Course
Conundrum Card
now.



**COURSE
CONUNDRUM**

Draw a Course
Conundrum Card
now.



**COURSE
CONUNDRUM**

Draw a Course
Conundrum Card
now.



**COURSE
CONUNDRUM**

Draw a Course
Conundrum Card
now.



**COURSE
CONUNDRUM**

Draw a Course
Conundrum
Card now.



**COURSE
CONUNDRUM**

Draw a Course
Conundrum Card
now.



**COURSE
CONUNDRUM**

Draw a Course
Conundrum Card
now.



**COURSE
CONUNDRUM**

Draw a Course
Conundrum Card
now.



**COURSE
CONUNDRUM**

Draw a Course
Conundrum Card
now.



**COURSE
CONUNDRUM**

Draw a Course
Conundrum Card
now.

Roll an **EVEN** number
to complete the
module.

Roll an **ODD** number
and lose **1 Course
Support Card**. Play
passes to left until one
player completes the
module.

Roll an **EVEN** number
to complete the
module.

Roll an **EVEN**
number to
complete the
module.

Roll an **EVEN**
number to
complete the
module.

Roll an **ODD** number
and lose **1 Course
Support Card**. Play
passes to left until one
player completes the
module.

Roll an **ODD**
number and lose **1
Course Support
Card**. Play passes
to left until one
player completes
the module.

Roll an **ODD**
number and lose **1
Course Support
Card**. Play passes
to left until one
player completes
the module.

Roll an **EVEN** number to complete the module.

Roll an **ODD** number and lose **1 Course Support Card**. Play passes to left until one player completes the module.

Roll an **EVEN** number to complete the module.

Roll an **ODD** number and lose **1 Course Support Card**. Play passes to left until one player completes the module.

Roll an **EVEN** number to complete the module.

Roll an **ODD** number and lose **1 Course Support Card**. Play passes to left until one player completes the module.

Roll an **EVEN** number to complete the module.

Roll an **ODD** number and lose **1 Course Support Card**. Play passes to left until one player completes the module.

Roll an **EVEN** number to complete the module.

Roll an **ODD** number and lose **1 Course Support Card**. Play passes to left until one player completes the module.

Roll an **EVEN** number to complete the module.

Roll an **ODD** number and lose **1 Course Support Card**. Play passes to left until one player completes the module.

Roll an **EVEN** number to complete the module.

Roll an **ODD** number and lose **1 Course Support Card**. Play passes to left until one player completes the module.

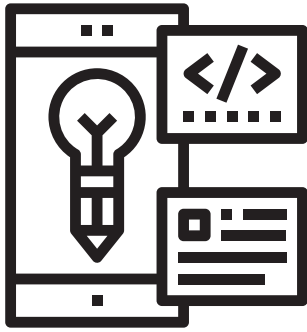
Roll an **EVEN** number to complete the module.

Roll an **ODD** number and lose **1 Course Support Card**. Play passes to left until one player completes the module.

Roll an **EVEN** number to complete the module.

Roll an **ODD** number and lose **1 Course Support Card**. Play passes to left until one player completes the module.

DESIGN DEPT



The **Design Department** was called together to help with the course. Collect **2 Course Support Cards**.

DESIGN TEAM



A **Design Team** was called together to help with the course. Collect **1 Course Support Card** or remove **1 Course Conundrum Card** from play.

Roll an **EVEN** number to complete the module.

Roll a **1** and you're removed from the course; Roll **3** or **5** and play passes to left. Roll until one player completes the module.

Roll an **EVEN** number to complete the module.

Roll an **EVEN** number to complete the module.

Roll an **EVEN** number to complete the module.

Roll a **1** and you're removed from the course; Roll **3** or **5** and play passes to left. Roll until one player completes the module.

Roll a **1** and you're removed from the course; Roll **3** or **5** and play passes to left. Roll until one player completes the module.

Roll an **ODD** number and lose **1 Course Support Card**. Play passes to left until one player completes the module.

Roll an **EVEN** number to complete the module.

Roll an **EVEN** number to complete the module.

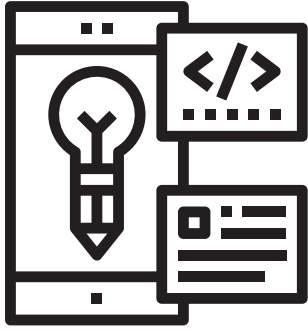
Roll an **EVEN** number to complete the module.

Roll an **ODD** number and lose **1 Course Support Card**. Play passes to left until one player completes the module.

Roll an **ODD** number and lose **1 Course Support Card**. Play passes to left until one player completes the module.

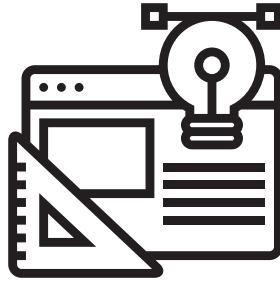
Roll an **ODD** number and lose **1 Course Support Card**. Play passes to left until one player completes the module.

DESIGN DEPT



The Design Department was called together to help with the course. Collect 2 Course Support Cards.

DESIGN TEAM



A Design Team was called together to help with the course. Collect 1 Course Support Card or remove 1 Course Conundrum Card from play.

